

Microsoft® SharePoint 2010 Ignite IT Pro Training

Hands-On Lab: Business Continuity Management

Hands On Lab

Information in this document, including URL and other Internet Web site references, is subject to change without notice. Unless otherwise noted, the example companies, organizations, products, domain names, e-mail addresses, logos, people, places, and events depicted herein are fictitious, and no association with any real company, organization, product, domain name, e-mail address, logo, person, place or event is intended or should be inferred. Complying with all applicable copyright laws is the responsibility of the user. Without limiting the rights under copyright, no part of this document may be reproduced, stored in or introduced into a retrieval system, or transmitted in any form or by any means (electronic, mechanical, photocopying, recording, or otherwise), or for any purpose, without the express written permission of Microsoft Corporation.

Microsoft may have patents, patent applications, trademarks, copyrights, or other intellectual property rights covering subject matter in this document. Except as expressly provided in any written license agreement from Microsoft, the furnishing of this document does not give you any license to these patents, trademarks, copyrights, or other intellectual property.

©2009 Microsoft Corporation. All rights reserved.

Microsoft, MS-DOS, Windows, Office 2010, and SharePoint Server 2010 are either registered trademarks or trademarks of Microsoft Corporation in the United States and/or other countries.

The names of actual companies and products mentioned herein may be the trademarks of their respective owners.

Business Continuity Management

Contents

Business Continuity Management	2
Before You Begin	3
Estimated time to complete this lab	3
Objectives	3
Prerequisites	3
Lab scenario	3
Exercise 1: Adding a new SharePoint Web Application and creating content	4
Creating a New Web Application	4
Creating Content	4
Exercise 2: Delete the Web Application	6
Deleting a Web Application	6
Exercise 3: Navigate detached Content database in Central Administrator	8
Exercise 4: Import the exported content using Windows Powershell	11

Before You Begin

Estimated time to complete this lab

45 minutes

Objectives

After completing this lab, you will be able to:

- Navigate through an unattached SharePoint Content Database
- Export content from an unattached SharePoint Content Database
- Import previously exported content

Prerequisites

Before working on this lab, you must have experience of working with previous versions of SharePoint Products and Technologies.

In addition, you should have completed Hands on Lab: Installation and Configuration of SharePoint Server 2010.

Lab scenario

Now that you have installed SharePoint, it is time to take a look at some of the new data recovery features that can be found in Central Administration.

Exercise 1: Adding a new SharePoint Web Application and Creating Content

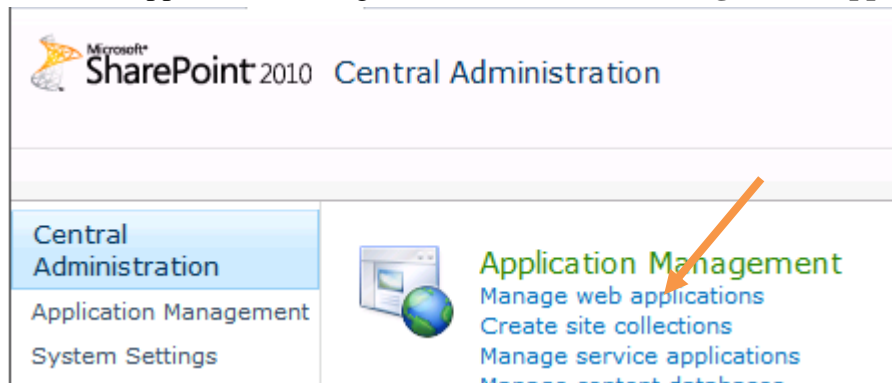
Make sure you are logged in as:

Username: **contoso\administrator**

Password: **pass@word1**

Creating a New Web Application

1. Open **Central Administration** by clicking **Start > All Programs > Microsoft SharePoint 2010 Products > SharePoint 2010 Central Administration**.
2. Under the Application Management section, click **Manage Web Applications**:

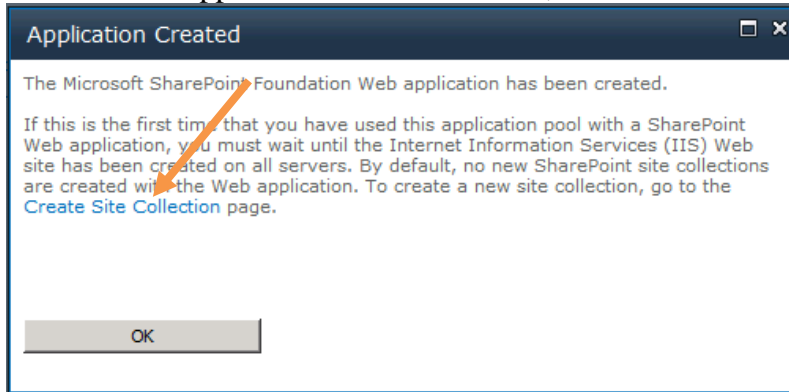


3. In the Ribbon, click **New > Web Application**.
4. Fill out the Create New Web Application page:
 - a. For Authentication choose **Classic Mode Authentication**
 - b. In the IIS Web Site, enter **81** for the Port (**do not** fill in the Host Header)
 - c. In the Security Configuration section keep the defaults
 - d. In the Public URL section keep the defaults
 - e. In the Application Pool section, choose **Create a new application pool**
 - f. Select **Configurable** and select **CONTOSO\sp_portalappool** from the dropdown.
 - g. For Database Name, enter **BCM_Demo**
 - h. Click **OK**.

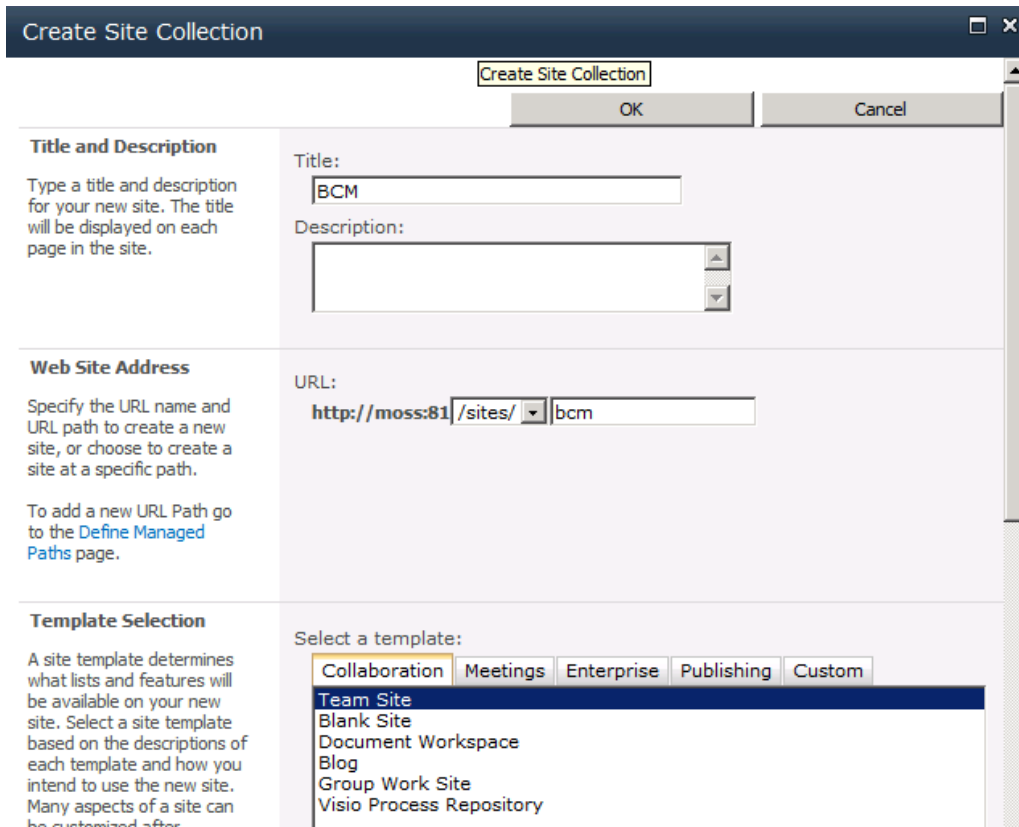
Creating Content

Now you will create some content to restore later in the lab.

1. Once the web application has been created, click the **Create Site Collection** link.

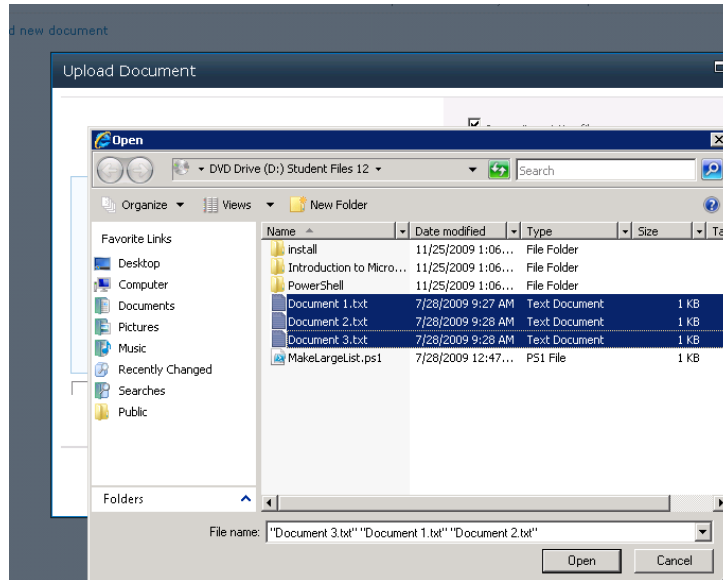


2. Give the new site collection a Title of **BCM**
3. For the site URL, change the dropdown to **/sites/** and type **bcm** in the text box
4. Click the **Collaboration** tab and choose **Team Site** as the template
5. Fill in the Primary Site Administrator as **contoso\administrator**
6. Click **OK** to create the new site.

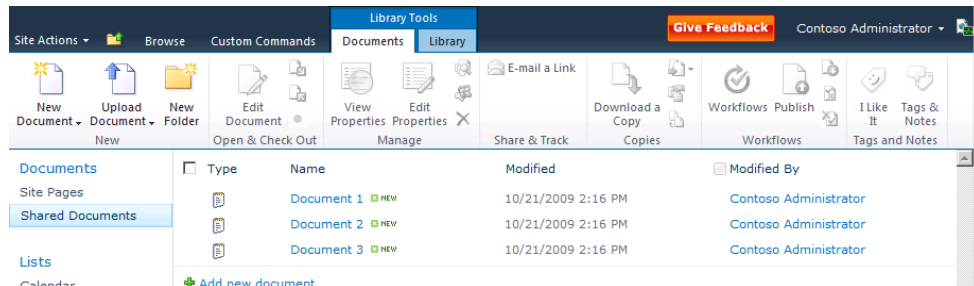


7. At the Top-Level Site Successfully Created screen, click the link to **http://moss:81/sites/bcm**. If you are prompted to login, use **contoso\administrator** and **pass@word1**
8. Upload three documents:
 - a. In the Quick Launch menu on the left, click on **Shared Documents**.
 - b. Click the **Documents** tab under the Library Tools header.
 - c. In the Ribbon, click **Upload Document**.

- d. On the Upload Document screen, click **Upload Multiple Files...**
- e. Click **Browse for files instead**
- f. Navigate to **D:**
- g. While holding CTRL, click **Document 1.txt**, **Document 2.txt** and **Document 3.txt** to select the documents, then click **Open**.



- h. Click **OK**.
- i. When the files have uploaded, click **Done**.

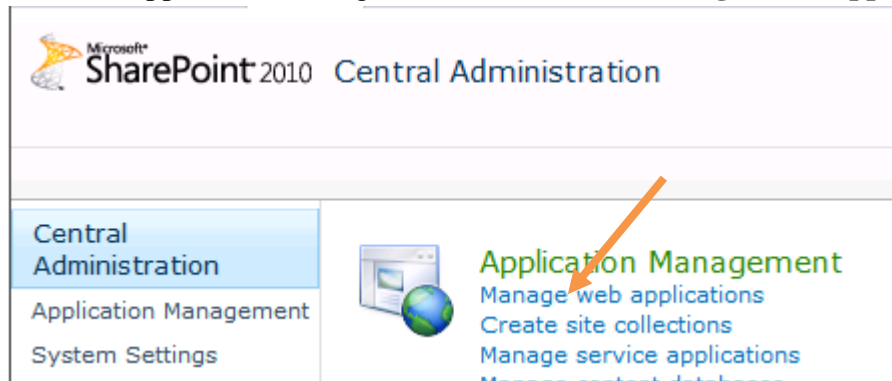


Exercise 2: Delete the BCM Web Application

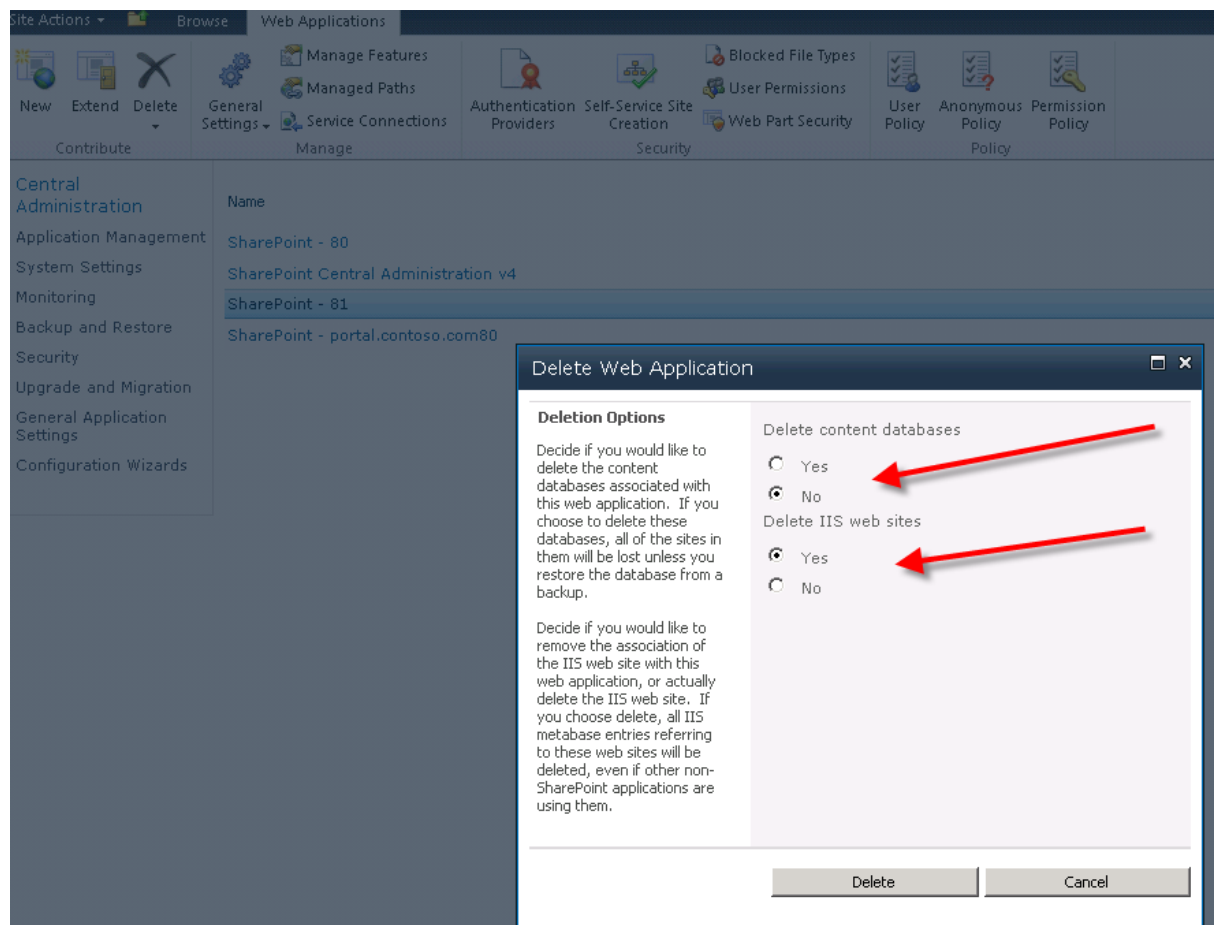
Deleting a Web Application

1. Switch back to Central Administration and navigate back to the home page by clicking **Central Administration** in the Quick Launch.

- Under the Application Management section, click **Manage Web Applications**.



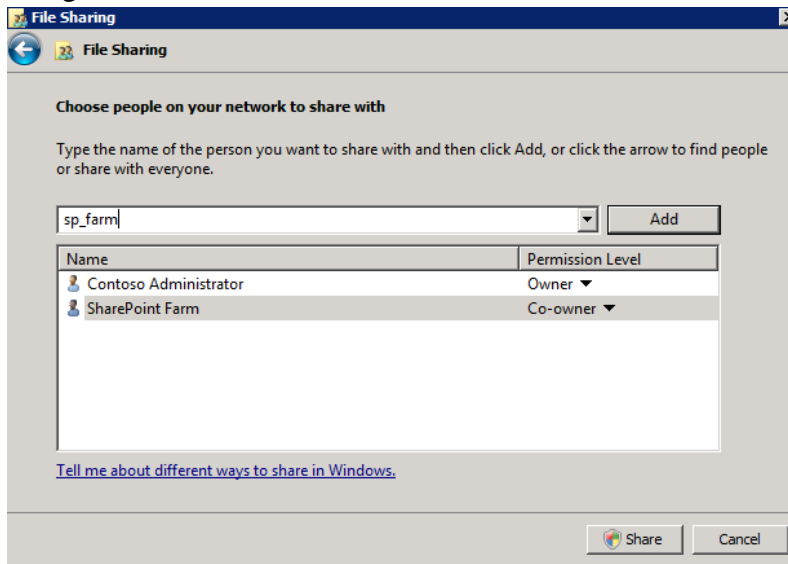
- Select the **SharePoint - 81** Web Application
- In the Ribbon, click **Delete > Delete Web Application**
- It is important that you follow this step closely, otherwise you may need to return to the beginning of the lab and start over.** In the Delete Web Application dialog window, choose **No** for “Delete Content Databases” and **Yes** for “Delete IIS web sites”



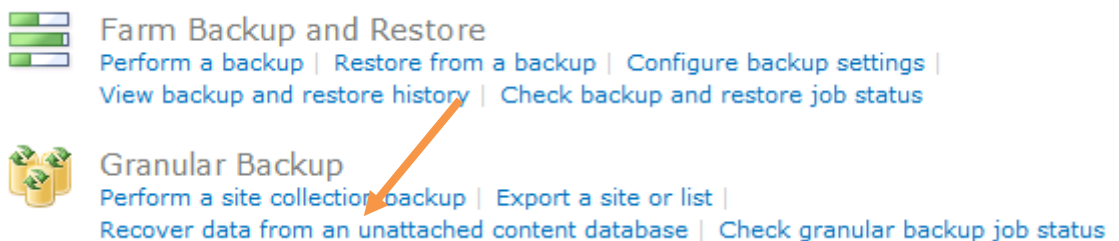
6. Click **Delete**
7. Click **OK** in the Message from webpage dialogue box, confirming the deletion.
(Note: it may take several seconds for the operation to complete.)

Exercise 3: Navigate Content of a Detached Content Database via Central Administration

1. Open Windows Explorer and navigate to the root of the C:\ drive.
2. Create a **new folder** called **BCMDemo**. (the path of this folder should be C:\BCMDemo)
3. **Right-click** on the BCMDemo folder and choose **Properties**, click the **Sharing** tab, then click the **Share** button.
4. Enter **sp_farm** in the text box and click **Add**.
5. Change the Permission Level of the SharePoint Farm account to **Co-owner**.



6. Click **Share** to share the folder, then click **Done**, and then click **Close** to close the BCMDemo properties folder.
7. Switch back to Central Administration.
8. Click the **Backup and Restore** link in the Quick Launch.
9. Under the Granular Backup heading, click **Recover data from an unattached content database**



10. On the Unattached Content Database Data Recovery page:
 - a. Enter **MOSS** as the Database Server name
 - b. Enter **BCM_Demo** for the Database Name
 - c. In the Choose operation section, select **Browse content**
 - d. Click **Next**

Database Server

Database Name

Database authentication

Windows authentication (recommended)

SQL authentication

Account

Password

Choose operation:

Browse content

Backup site collection

Export site or list

11. On the Browse Content page:
 - a. For **Site Collection**, click the drop down from `http://moss:5555` and click **Change Site Collection**
 - b. From the Select Site Collection screen select **/sites/bcm**. (**Note:** The URL will say `http://moss:5555/sites/bcm` instead of `http://moss:81/sites/bcm`. As long as `/sites/bcm` is selected, it will work fine.)
 - c. Click **OK**

Site Collection: **http://moss:5555/sites/bcm** ▾

Site: **/sites/bcm** ▾

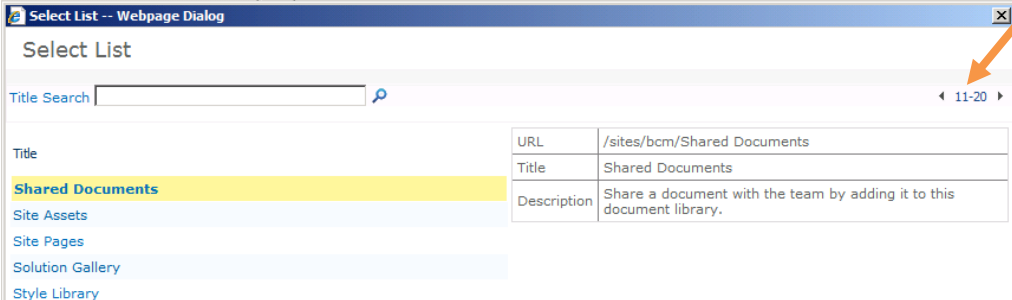
List: **Shared Documents** ▾

Choose operation:

Backup site collection

Export site or list

- d. Next to **Site:** click the drop down and select **Change Site**.
- e. Because there is only one site in the site collection, just click **OK** at the popup screen.
- f. Next to **List:** click the drop down and select **Change List**.
- g. From the Select List screen, **click the arrow** toward the upper right to page through to the available lists



Select List -- Webpage Dialog

Select List

Title Search 🔍 ◀ 11-20 ▶

Title	URL	/sites/bcm/Shared Documents
Shared Documents	Title	Shared Documents
Site Assets	Description	Share a document with the team by adding it to this document library.
Site Pages		
Solution Gallery		
Style Library		

- h. Select **Shared Documents** and click **OK**.
- i. Under Choose operation: select **Export site or list** and click **Next**

12. In the Filename text box, enter **\\moss\bcmdemo\bcmrestore.cmp**

Site Collection: **http://moss:5555/sites/bcm** ▾

Site: **/sites/bcm** ▾

List: **Shared Documents** ▾

Filename:

Overwrite existing files
Example: \\backup\SharePoint\export.cmp

Export full security




Export versions


▾

13. Click **Start Export**

- The status page will update to the status of the timer job.
- Once the operation is completed, a status of **Succeeded** will show under the Content Export header in the Previous Jobs section. There should now be two files (bcmrestore.cmp and bcmrestore.cmp.export) in the C:\BCMDemo directory.

Readiness

-  No site collection backup is in progress.
-  No export is in progress.
-  Timer service is running.

 Refresh

Site Collection Backup

Current Job
Status: No operation in progress.

Previous Job
Status: No previous job.

Content Export

Current Job
Status: No operation in progress.

Previous Job
Status: Succeeded
Completed: 11/30/2009 9:40 AM
Duration (hh:mm:ss): 0:00:10
Recovery Step: To recover the data use the PowerShell import command Import-SPWeb. For more details, type Import-SPWeb -? at the PowerShell command prompt.

BCMDemo

Computer > Local Disk (C:) > BCMDemo

File Edit View Tools Help

Organize Views

Name	Date modified	Type	Size	Tags
bcmrestore.cmp	11/30/2009 9:40...	CMP File	43 KB	
bcmrestore.cmp.export.log	11/30/2009 9:40...	Text Document	6 KB	

Exercise 4: Import the exported content using Windows Powershell

- Open the SharePoint 2010 Management Shell by clicking **Start > All Programs > Microsoft SharePoint 2010 Products > SharePoint 2010 Management Shell**. (Note: You can ignore any errors or exceptions you may see when PowerShell first opens.)
- Use the `New-SPSite` cmdlet to create a new location for importing the content. At the PowerShell prompt, type the following cmdlet and press **Enter**:
`New-SPSite`
- This PowerShell cmdlet needs additional parameters to run.
 - For Url, enter: **http://portal.contoso.com/sites/bcm** and press **Enter**

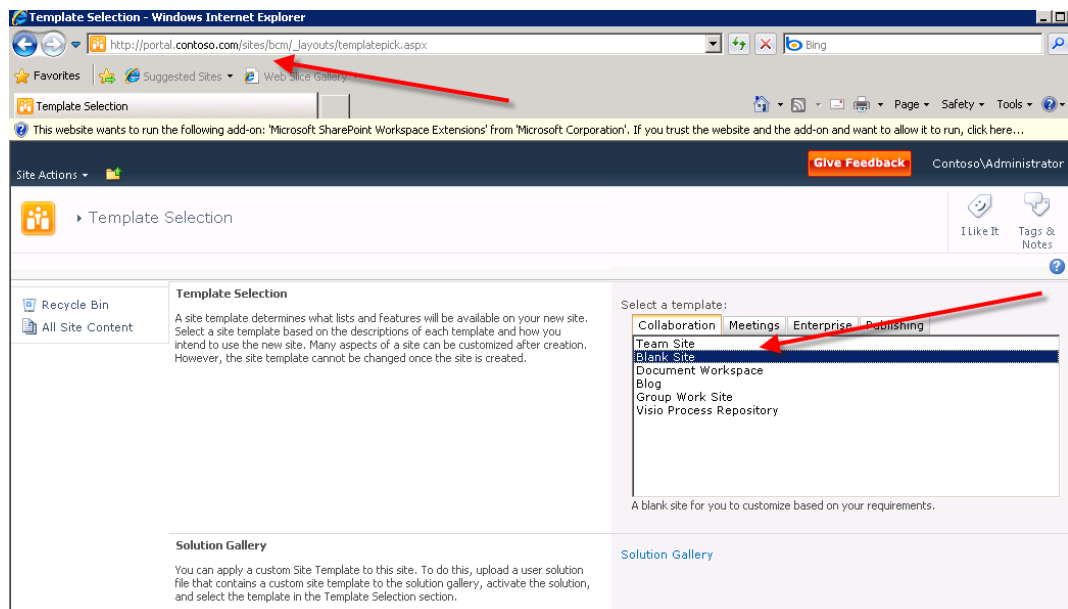
- b. For OwnerAlias, enter **CONTOSO\Administrator** and press **Enter**

```
PS C:\Users\Administrator> New-SpSite

cmdlet New-SpSite at command pipeline position 1
Supply values for the following parameters:
Url: http://portal.contoso.com/sites/bcm
OwnerAlias: Contoso\Administrator

Url
----
http://portal.contoso.com/sites/bcm
```

4. Once the site collection is created, switch to Internet Explorer and navigate to **http://portal.contoso.com/sites/bcm** (log in as **contoso\administrator** with a password of **pass@word1** if prompted for a login)
5. Since a template was not specified in the new site creation, you are presented with the Select Template screen. Choose the **Blank Site** template and click **OK** twice.



6. When the site displays, switch back to the SharePoint 2010 Management Shell window.
7. To import the content from the backup, type following cmdlet and press **Enter**

```
Import-SPWeb -identity http://portal.contoso.com/sites/bcm -path \\moss\BCMDemo\BCMRestore.cmp
```

```
PS C:\Users\Administrator> New-SpSite

cmdlet New-SpSite at command pipeline position 1
Supply values for the following parameters:
Url: http://portal.contoso.com/sites/bcm
OwnerAlias: CONTOSO\Administrator

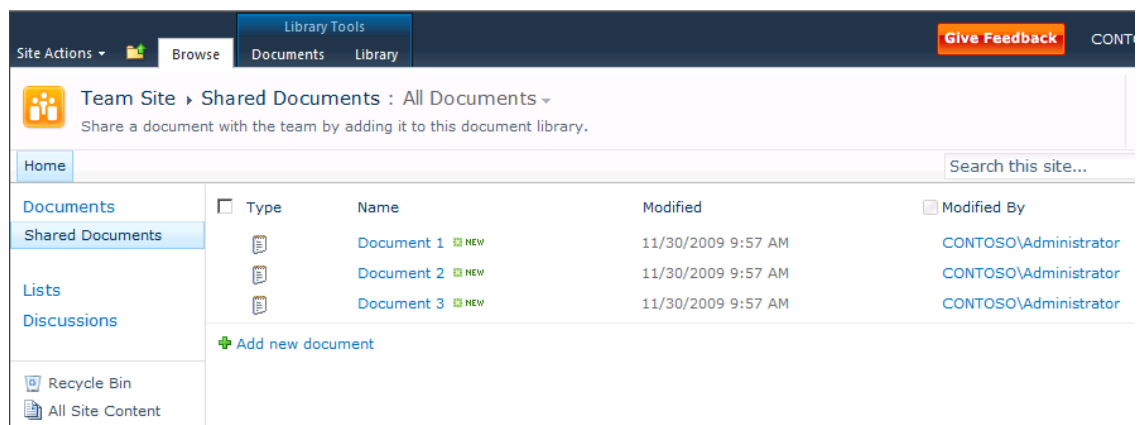
Url
----
http://portal.contoso.com/sites/bcm

PS C:\Users\Administrator> Import-SPWeb -identity http://portal.contoso.com/sites/bcm -path \\moss\BCMDemo\bcmrestore.cmp

Log file generated:
    \\moss\BCMDemo\bcmrestore.cmp.import.log

PS C:\Users\Administrator>
```

8. Switch back to Internet Explorer and **Refresh the page**.
9. In the Quick Launch, click **Shared Documents**. You should see the three documents that have been imported back into the site.



End of Lab

Conclusion

In this lab you have learned how to recover content from an unattached SharePoint content database. As a review, you have learned some of the following concepts in this lab:

- Browsing and extracting content from an unattached SharePoint Content Database
- Using PowerShell to create a new SharePoint site
- Restoring content from a backup cmp file using PowerShell

For more information on SharePoint Server 2010, visit the SharePoint Products and Technologies team blog at <http://blogs.msdn.com/sharepoint> for regular announcements and updates.